

Teacher's Resource Guide

Intro to Sanskrit Speech Sounds
12-Lesson Unit

©Copyright 2015, Kathy Lee (Kamalee) Strickland

Table of Contents

Unit Sequence.....	3
Charts from Sanskrit by CD.....	4
Sound Symbol Chart by Lesson.....	5
Sound Symbol Chart Master.....	6
Sound Symbols/Mouth Positions Master.....	7
Alphabet Characteristics.....	8
Lesson Slides/Handouts.....	9

Unit Sequence

Lesson 1: Introduction

VOWELS:

Lesson 2: Simple Vowels (Part 1)

Lesson 3: Diphthongs

Lesson 4: Anusvara, Visarga, Song Foundation

CONSONANTS:

Lesson 5: Guttural Consonants

Lesson 6: Palatal Consonants

Lesson 7: Cerebral Consonants

Lesson 8: Dental Consonants

Lesson 9: Labial Consonants

Lesson 10: Semivowels

Lesson 11: Sibilants, Aspirate

Lesson 12: Complete Alphabet Song

Charts from Sanskrit by CD

The following charts from the required text, *Intro to Sanskrit: Lesson 1 of Sanskrit by CD* (Houston, 1991), are referenced in the lessons. They are included here for quick reference and context to the course sequence.

Vowels

Lesson 2: अ आ इ ई उ ऊ

Lesson 3: ए ऐ ओ औ

Lesson 7: ऋ ॠ Lesson 8: ॡ Lesson 4: अं अः

Consonants

Lesson 5: क ख ग घ ङ

Lesson 6: च छ ज झ ञ

Lesson 7: ट ठ ड ढ ण

Lesson 8: त थ द ध न

Lesson 9: प फ ब भ म

Semivowels

Lesson 10: य र ल व

Sibilants

Lesson 11: श ष स ह

Aspirate

Vowels

अ आ इ ई उ ऊ
ए ऐ ओ औ
ऋ ॠ ऌ
अं अः

Consonants *

क ख ग घ ङ
च छ ज झ ञ
ट ठ ड ढ ण
त थ द ध न
प फ ब भ म

Semi-vowels

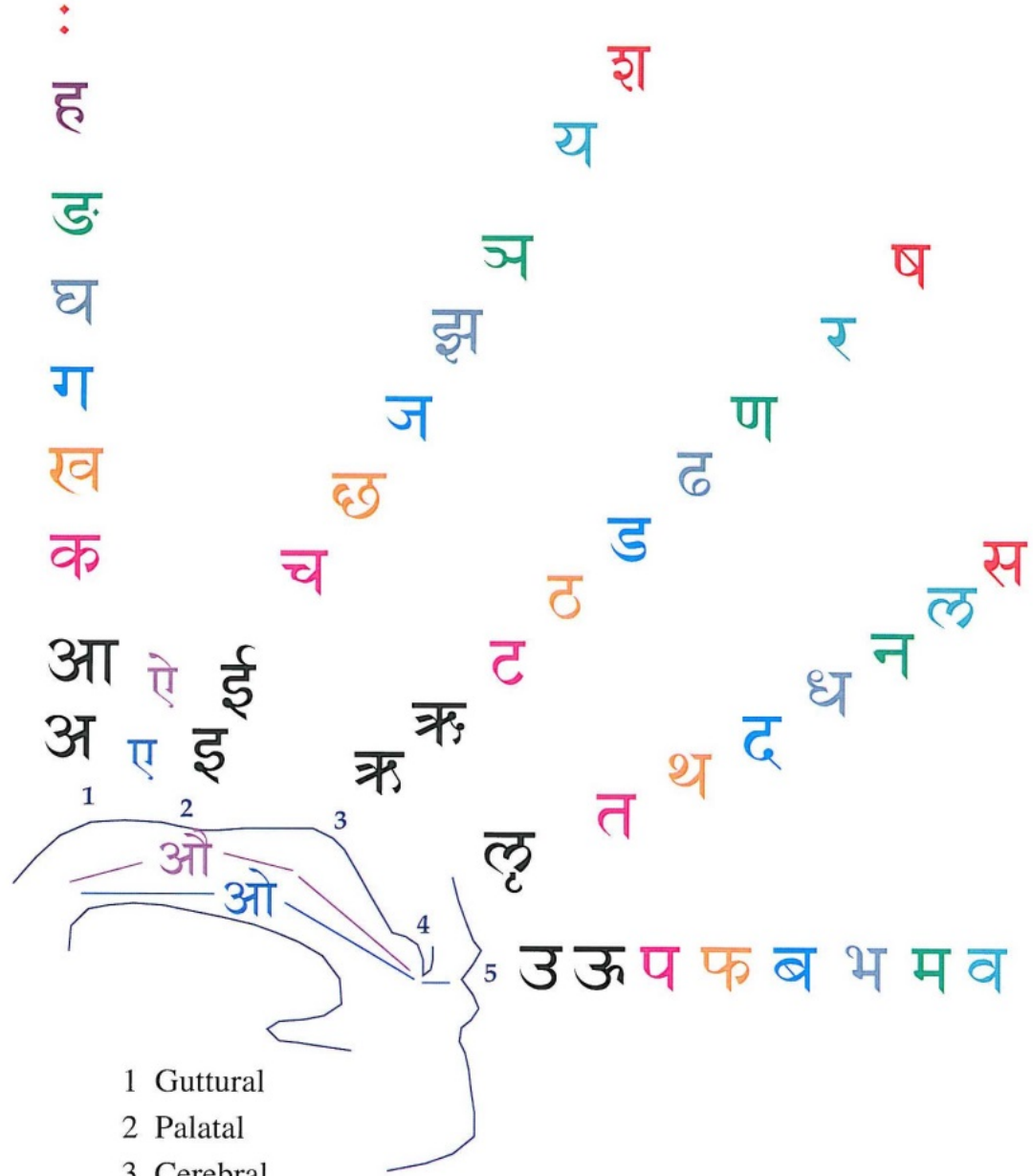
य र ल व

Sibilants

श ष

Aspirate

स ह



Alphabet Characteristics

Vowels

Simple	Position 1 - Guttural		Position 2 - Palatal		Position 5 - Labial		
	short	long	short	long	short	long	
	अ	आ	इ	ई	उ	ऊ	
Diphthongs			1-2 Guttural - Palatal		1-5 Guttural - Labial		
			ए	ऐ	ओ	औ	
				guṇa	vrddhi	guṇa	vrddhi
Simple	Position 3 - Cerebral		Position 4 - Dental	Anusvāra	Visarga		
	short	long	short	nasal	1-Guttural (hard final breath)		
	ऋ	ॠ	ऌ	ं	ः		

Consonants

	Hard (unvoiced) unaspirated	Hard (unvoiced) aspirated	Soft (voiced) unaspirated	Soft (voiced) aspirated	Soft (voiced) nasal
1 - Guttural (throat)	क	ख	ग	घ	ङ
2 - Palatal (hard palate)	च	छ	ज	झ	ञ
3 - Cerebral (roof)	ट	ठ	ड	ढ	ण
4 - Dental (teeth)	त	थ	द	ध	न
5 - Labial (lips)	प	फ	ब	भ	म

Semivowels (Soft)

2-Palatal	3-Cerebral	4-Dental	5-Labial
य	र	ल	व

Sibilants (Hard)

2-Palatal	3-Cerebral	4-Dental
श	ष	स

Aspirate (Soft)

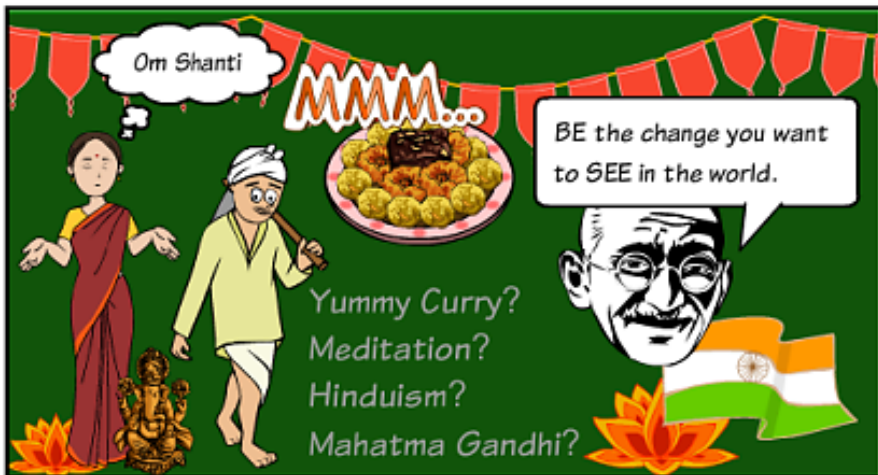
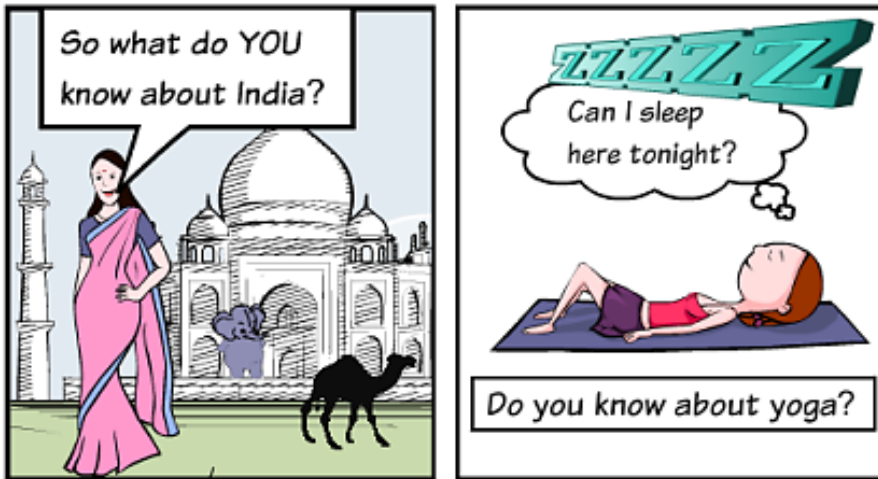
1- Guttural
ह

Lesson Slides

Intro to Sanskrit Speech Sounds
12-Lesson Unit

Lesson 1: Learner Analysis

INDIA SURVEY - BY KATHYSTRICK



1. Have you listened to Indian music/chanting or watched a Bollywood movie?
2. Have you had Indian food?
3. Have you practiced yoga?
4. How do you like to learn? (videos, working with your hands, reading, other?)
5. What is your favorite subject in school?
6. What else interests you?
7. Do you know a language other than English?

Lesson 2

Simple Vowels:

अ

आ

इ

ई

उ

ऊ

Lesson 3

Diphthongs:

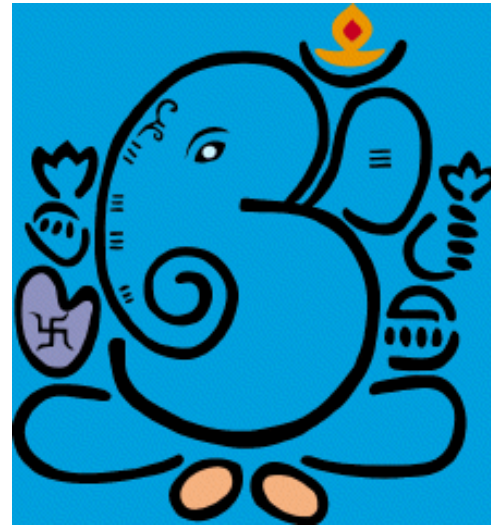
ए

ऐ

ओ

औ

Lesson 4



Lesson 4 (continued)

Anusvara and Visarga:

अं अः

Lesson 4 (continued)

Foundation of Alphabet Song:

अ आ इ ई उ ऊ
ए ऐ ओ औ
अं अः

Lesson 5



Lesson 5 (continued)



Image Source: "History of Sanskrit" by Mocomi Kids

(<https://www.youtube.com/watch?v=YLvY66bzhzs&feature=youtu.be>)

Lesson 5 (continued)

Guttural Consonants:

क

ख

ग

घ

ङ

Lesson 6

Palatal Consonants:

च

छ

ज

झ

ञ

Lesson 7

Cerebral Not-So-Simple Simple Vowels

ऋ

ॠ

Lesson 7 (continued)

Cerebral Consonants:

ट

ठ

ड

ढ

ण

Lesson 8

Dental Consonants:

त थ ढ ध न

Lesson 8 (continued)

Dental Not-So-Simple Simple Vowel:



Lesson 9

Labial Consonants:

5

प

फ

ब

भ

म

Lesson 10

Semivowels:

य

र

ल

व

Lesson 11

Sibilants and Aspirate:

श

ष

स

ह

Lesson 12

Complete Alphabet Song
(follow chart on p. 6)

